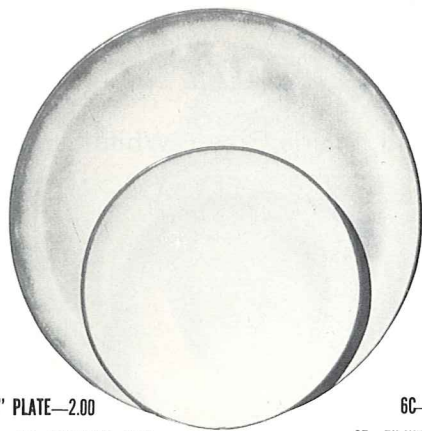


*4K—BUTTER DISH—2.00



6F—10" PLATE—2.00

6G—PLATE 7"—1.00



*6B—SUGAR WITH LID—1.75



*6A—9 OZ CREAMER—1.25

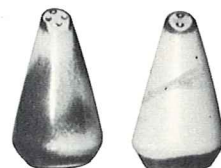


*6VT—2½ QT. TUREEN—4.50



6C—CUP—1.00

6E—5" WELLED SAUCER—.75



*6H—SALT & PEPPER—1.50



*6V—2½ QT. BAKER—4.50



*5LC—6 OZ. JUICE—.75



*5L—12 OZ. TUMBLER—1.00



6CL—DOUBLE COFFEE—1.00



*80—2 QT. PITCHER—3.00



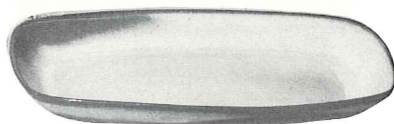
*81—1 QT. PITCHER—2.00



*6T—6 CUP TEA POT—3.00



*6VS—1½ QT. BAKER—3.50



5QS—13" STEAK PLATE (SHALLOW PLATTER)—2.00

6P—11" STEAK PLATE—1.80

5PS—9" TRAY—1.50



*6J—2 CUP TEAPOT—2.00



*6S—TWO SPOUT GRAVY—2.50



*6U—18 OZ. BAKER-FOR-TWO—2.50
A COVERED CANDY DISH

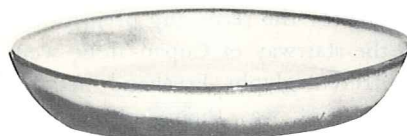


*BP—6 OZ. BEAN POT—.75

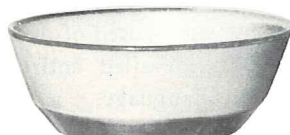


6X—14 OZ. CHILI SOUP—1.00

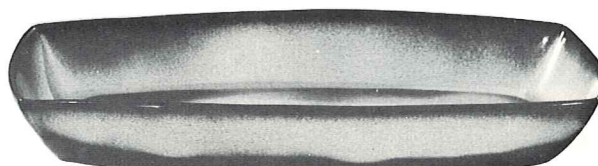
6XS—10 OZ. FRUIT—.80



*91—10" BAKING DISH—2.00

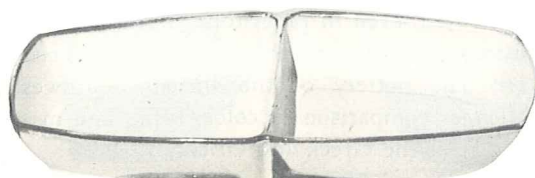


*6N—1 QT. BOWL—2.00

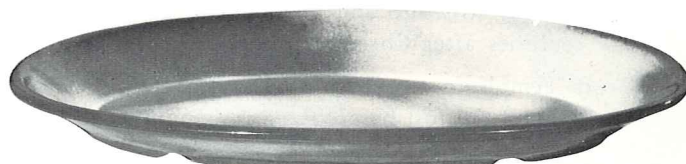


5P—17" DEEP PLATTER—6.00

5Q—13" DEEP PLATTER—3.00



5QD—13" DIVIDED BOWL—3.00



TP—17" OVAL PLATTER—6.00